



Le Château d'Arc-en-Barrois

A royal French château



Partnerselskabet Arc-en-Barrois P/S, Hambros Alle 27, 2900 Hellerup, Denmark
Château d'Arc-en-Barrois, 16 Place Moreau, 52210 Arc-en-Barrois, France
www.my-french-chateau.com



Château d'Arc-en-Barrois

Imagine being the owner of a share in a royal French château. With your own **private rooms** and access to the professionally maintained common grounds.



A dwelling at the Château d'Arc-en-Barrois is **within your reach**, situated in the **idyllic French village** of Arc-en-Barrois only a two and a half hour drive southeast of Paris.



Château d'Arc-en-Barrois



You will love to spend time in the **expansive**

common area including two magnificent banquet halls, two vaulted basement halls with "English" bar and billiards room, library, fitness area, wine cellar, champagne cellar, "industrial" kitchen, intimate pantry kitchen, library and a reading room, recreation room, lounge reception, and the **lovely natural setting** of a three-hectare park directly adjacent to the local golf course.





The Concept

Château d'Arc-en-Barrois functions similarly to a **condominium association**, with individual and common rights and obligations accorded its owners.



There are 50 shares – one share assigned to each apartment. As a shareholder, **you own 1/50th**, or 2 percent, of the château on equal terms with your fellow owners. Some owners have more than one share/apartment.



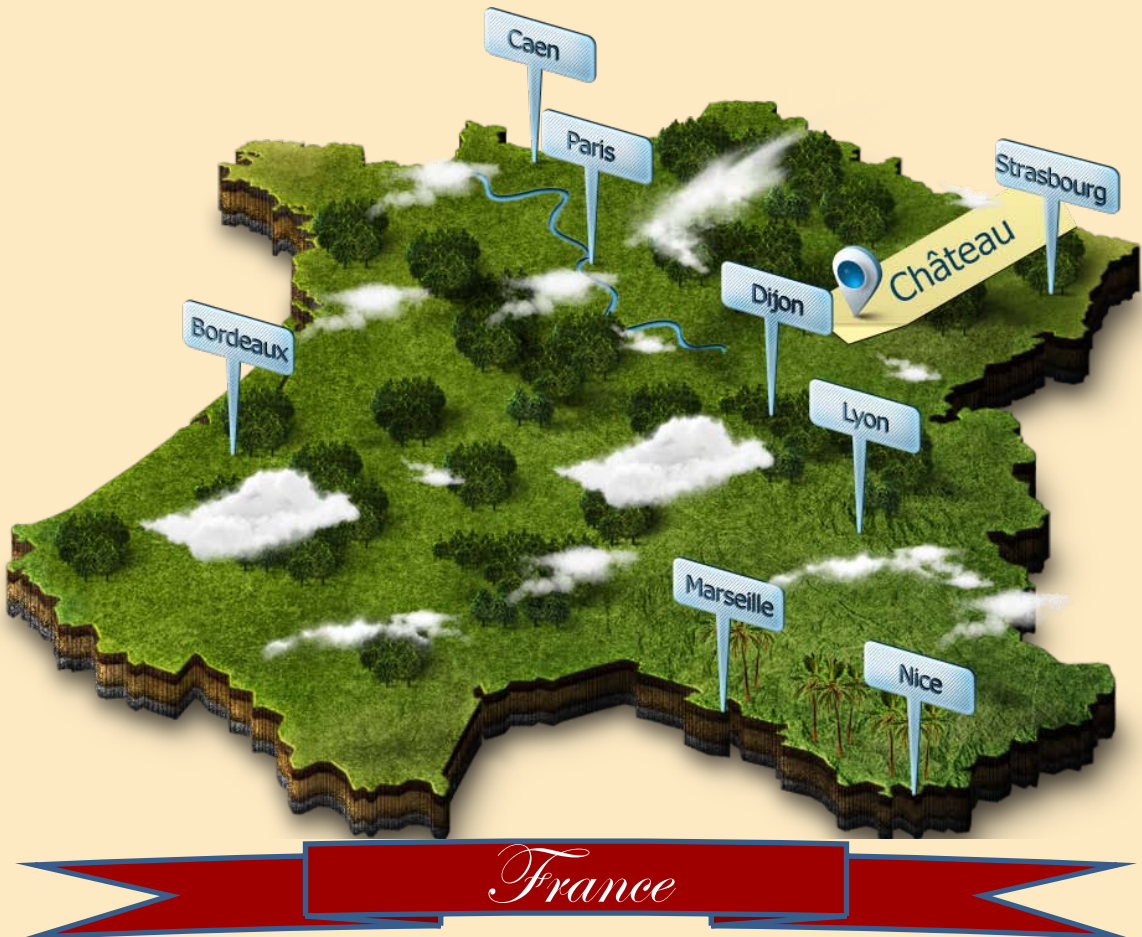
You can arrive without warning, **any time, any day of the year**, to enjoy the apartment and the common property as long as you want.



Location

The château is located two and a half hours drive from Paris and about the same distance from Basel, each city offering easy access by air. Major airlines and low cost carriers fly into both cities.

By car, the château is about 1200 km from Copenhagen, about 400 km from Munich, about 400 km from Brussels, and about 650 km from London.

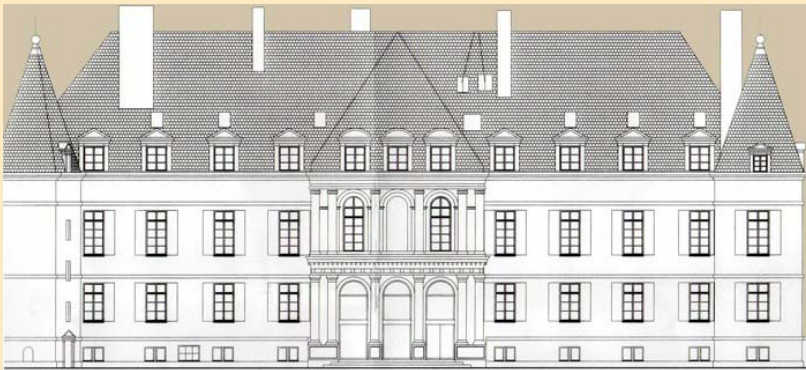


We are located just between the **Champagne** district to the North and Côte d'Or, or the **Bourgogne** district, to the South.



History...

Since the Middle Ages, the château in Arc-en-Barrois has belonged to **royal families** and French nobility. During the revolution of 1789 part of the château was destroyed and later confiscated during the first republic. At the restoration of the monarchy in 1830, **King Louis-Philippe** (1830-1848), member of the Orleans family, resumed ownership of the château and its vast forests. The king later transferred the property to his sister, Princess Louise Marie Adélaïde Eugénie d'Orléans - called 'Madame Adélaïde' - who was one of his closest advisers.



Between 1844 and 1848, Princess Adélaïde rebuilt the château into its current form to serve as a **hunting lodge**. Her nephew, the Prince of Joinville, inherited the château which remained the property of the Orleans family despite the fall of the monarchy in 1848. During World War I, the château served as a **temporary hospital** and was staffed with English, Canadian and American staff many of which were well-known writers and artists.



...and Tradition

You are in the midst of a region with **rich traditions in winemaking, cooking, and hunting** and with a **rich cultural life**.



Now **you too**

can enjoy events here
in that same tradition.





Apartments

Ground and First Floor

Each shareholder will enjoy individually designed interiors with luxurious bathrooms. Apartments are **move-in condition**. All you need is your toothbrush.

Each floor has its **unique charm**.



The first floor is characterized by large windows and **loft-like sleeping areas**.



Please note that the drawings are not to scale and are for information only. Apartments vary in size from 17 m² to 65 m². Go to: <http://my-french-chateau.com/en-lejligheder.html> for **current price list and overview of available apartments**.



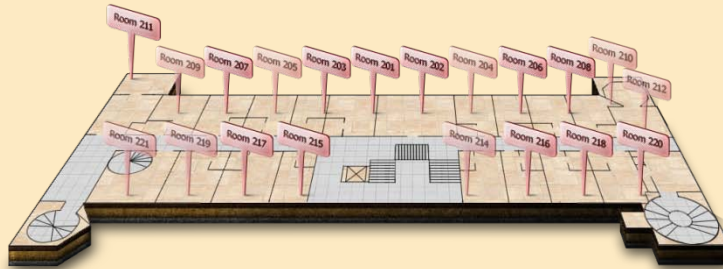
Apartments

Second and Third Floors

The second floor is characterized by **exposed beams**.



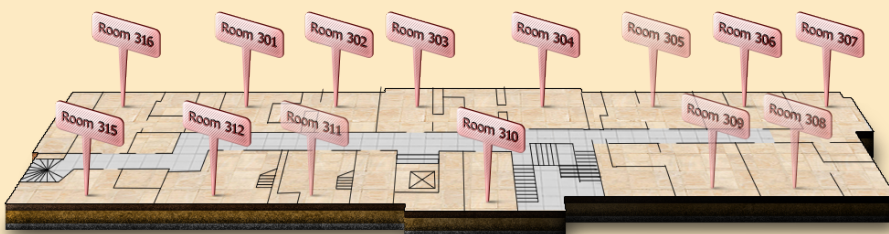
2nd Floor



The third floor offers sloping ceilings and charming **individualized interiors**.



3rd Floor

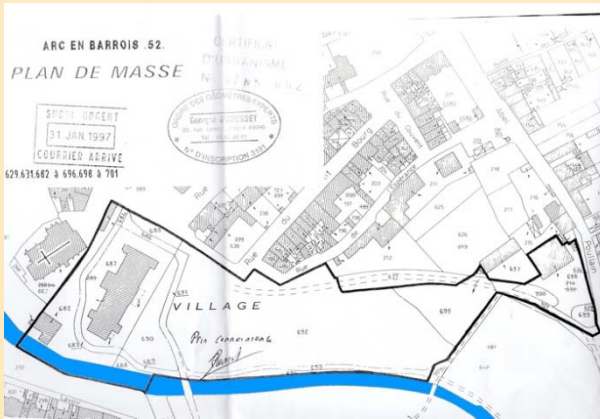


It's possible to install a kitchenette with fridge in your room, but not necessary since Château d'Arc-en-Barrois offers its own grand kitchen, divided into several units in the basement: kitchen with pantry, scullery, cook and freeze facilities, produce storage room, and of course locked wine and champagne cellars. Go to: <http://my-french-chateau.com/en-lejligheder.html> for current price list and overview of available apartments.

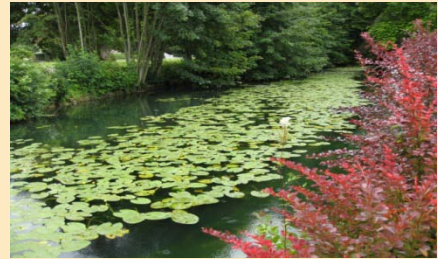


Property Management

With fifty owners sharing the operation expense, individual monthly costs of château operation are currently below Euro 200.



The château has been extensively renovated within the last five years. The common area is in **excellent condition**. The roof is natural slate and considered good for the next 150 years. External walls and gutters have been professionally certified. All electrical installations are recent or new and professionally certified.



Each Annual Budget is agreed at each **Annual General Meeting** open to attendance by all owners. It is in everyone's interest to **keep costs at a reasonable level**.



The château is **fully insured**. The apartments are the responsibility of the individual owners. Château management can provide names of insurance companies.



Local Life

The **village of Arc-en-Barrois** offers a golf course next to the château, two bakeries, a local supermarket "PetitCasino," a butcher, a café, two restaurants – one with a Michelin recommendation, a school, a post office and many nearby **sporting facilities**. The simple delights of nature are all around with everything from hot springs, biking, **horseback riding** and cultural experiences at a high level.



Upon arrival you will see the **town square**, located just outside the entrance to the château, with a monument to the city's fallen in the world wars, a newly renovated **town hall**, an old pharmacy, and the delightful Hotel du Parc.



Arc-en-Barrois is located near the famous "**Champagne Route**," where more than 15,000 families are involved in Champagne production. The vast majority of Champagne producers are small family businesses that do not sell their wine to supermarkets, so **great deals and wine experiences** are waiting for you all around the area. The **skiing** areas Métabief and Les Rousses are 2hrs 45 min away, Chambéry 3hrs 30 min away.



Château d'Arc-en-Barrois

**Partnerselskabet Arc-en-Barrois P/S,
Hambros Alle 27, 2900 Hellerup, Denmark
Tel.: +45 40 42 01 42/+45 28 90 91 92**

**Château d'Arc-en-Barrois
16 Place Moreau, 52210 Arc-en-Barrois, France
Tel.: +33 6 78 34 30 25**

www.my-french-chateau.com



January 2013